



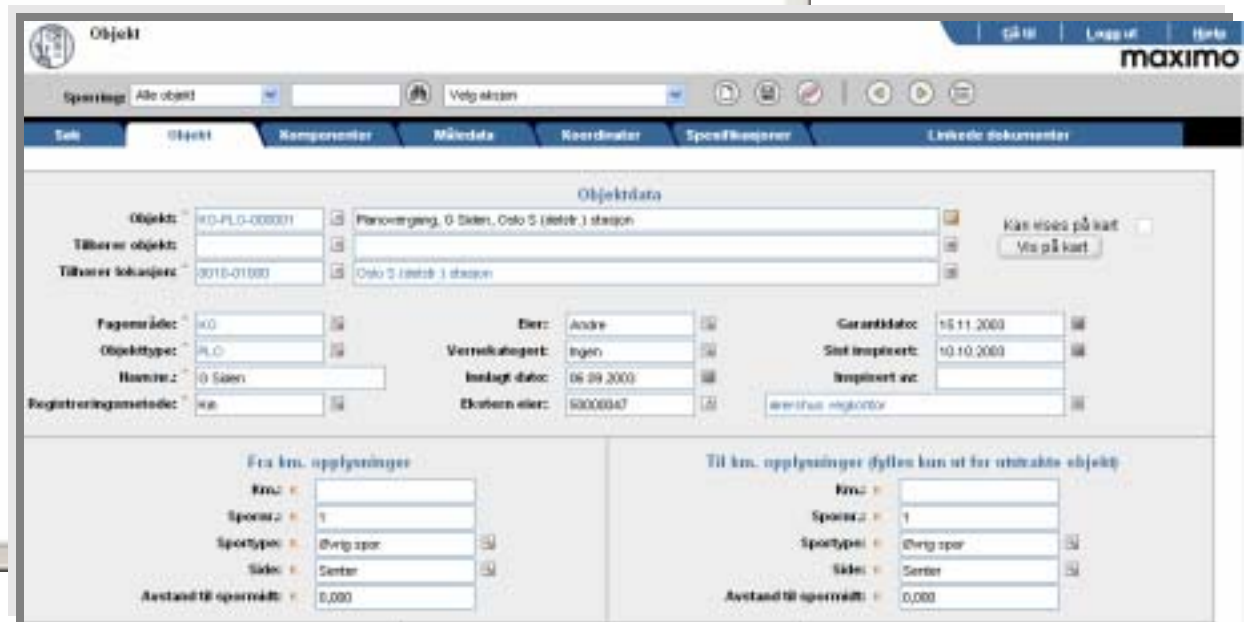
National Railway Data Bank

- Information of all tracks & technical installations
- Map based
- Running on Internet/Intranet
- Transforming of existing data to new datamodel
- 1200 users and 100 expert users
- Training of organisation
- Developed by ViaNova & Partners for Norwegian State Railway
- Contract signed 2001 and deliver 2004



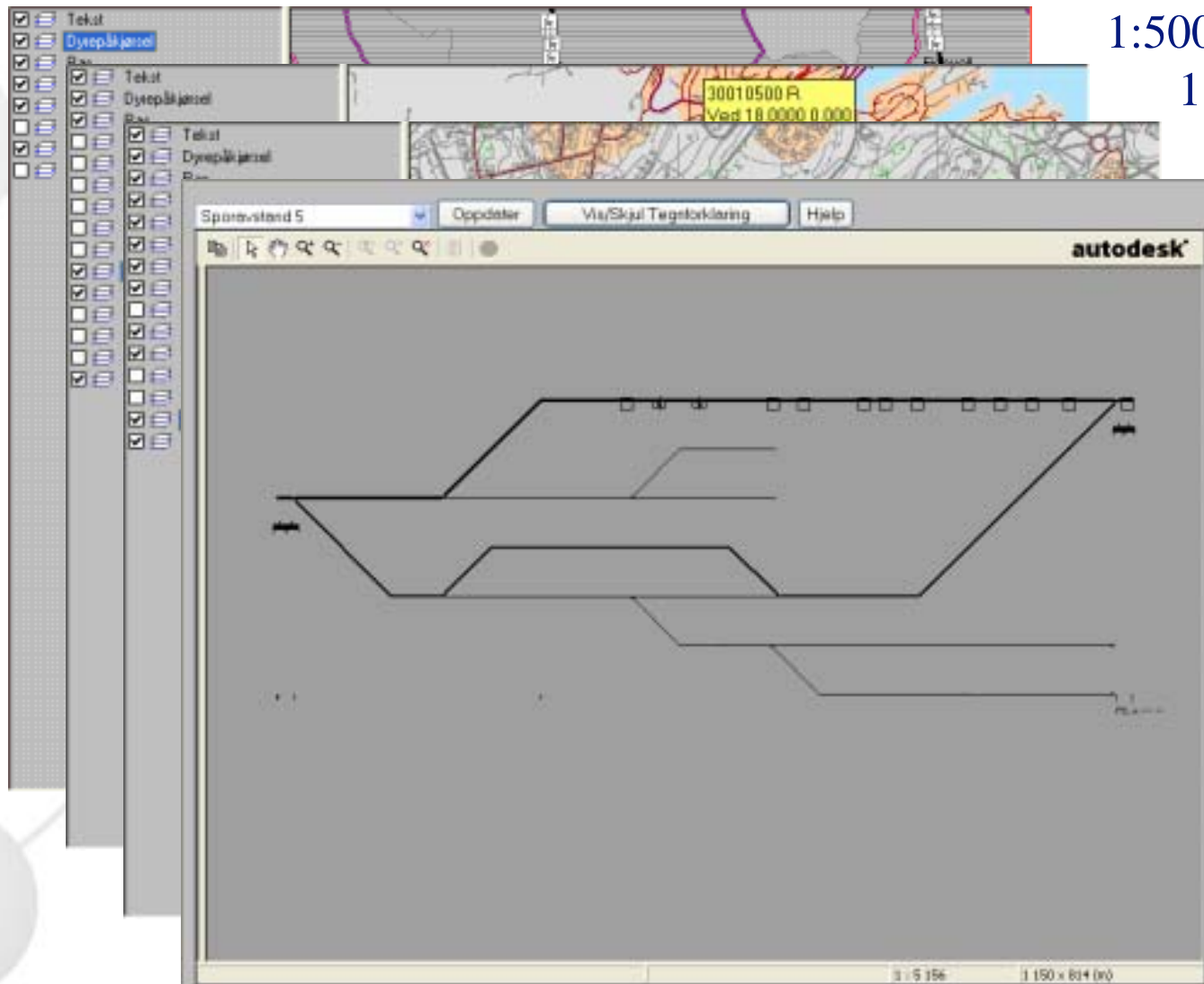


Web user interface





Map on web



1:500 000

1:50 000

1:10 000

Schematics

From 1:20 000 000 – 1:1



Railway Data Bank

Buffer



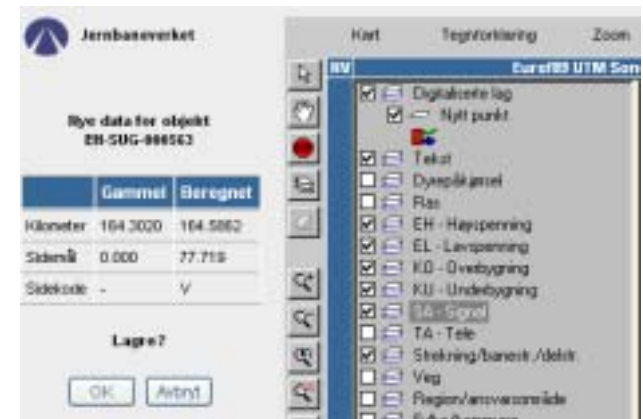
Find nearest road/path



Treeview, search, select, zoom

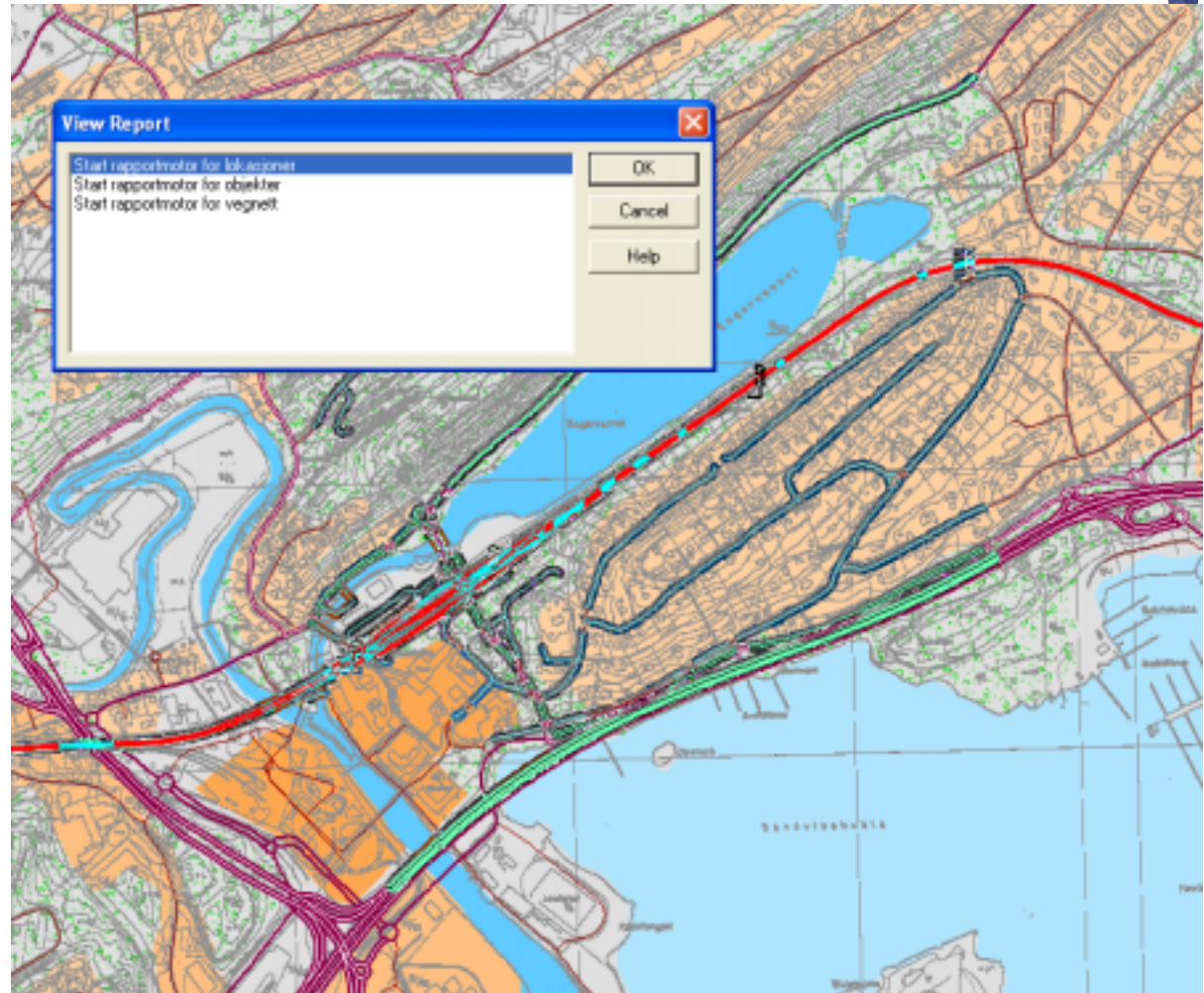


Simple object digitizing and positioning



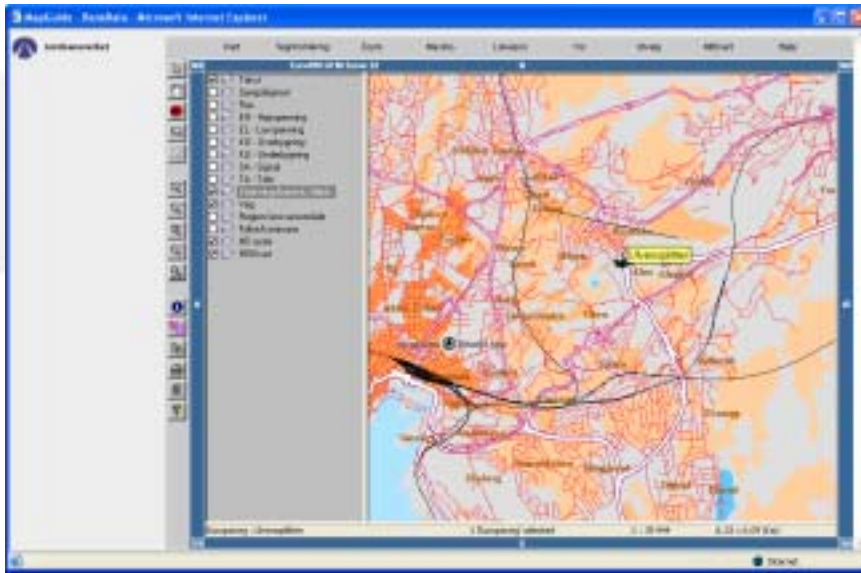


- Special Reports for:
 - Objects
 - Locations
 - Road-network
 - Events





Technologies



Data:

Oracle/ Oracle spatial

Geo datamodel:

Quadri

Map on web:

MapGuide

Reports:

Actuate

CAD system:

Novapoint Railway and Autodesk MAP

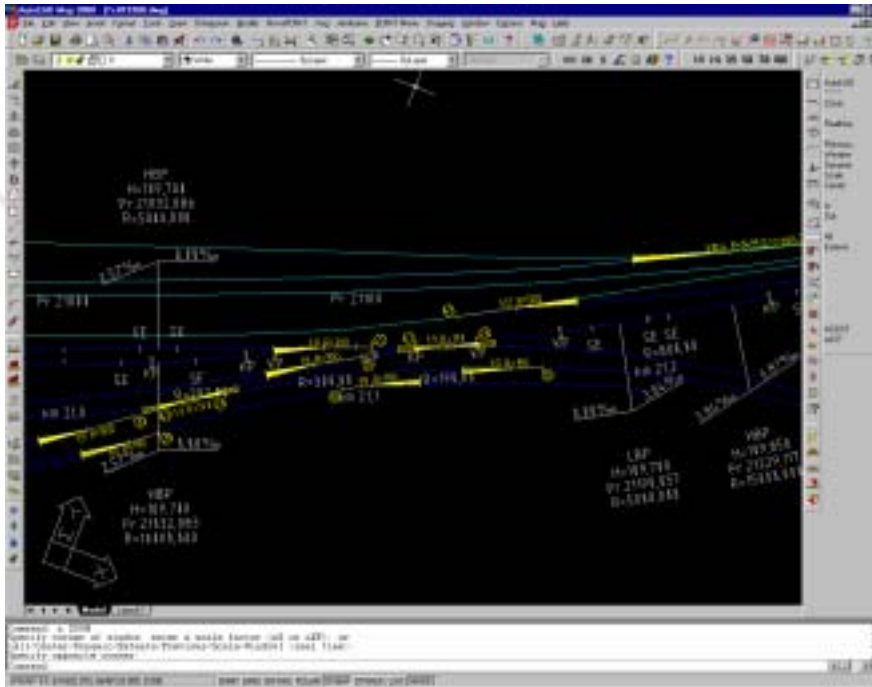
Maintenance model:

Maximo





Interaction with data from detailed design



Dialogue box titled "Railway" with tabs for "General Requirements", "Superstructure", "Speed Profile", "Horizontal Alignment", and "Object ID". The "Object ID" tab is active, showing a table of track data.

Object ID	R_TRACK (Quad)					
	From	To	Radius	Length	Speed	Cast
	13776.067	13814.769	1429.961	38.712	85	50
	13814.769	13844.769	-	30.000	85	-
	13844.769	13886.938	0.000	42.169	95	0
	13886.938	13911.938	-	25.000	85	-
	13911.938	13923.644	549.993	11.706	95	150
	13923.644	13948.644	-	25.000	85	-
	13948.644	13983.644	-	35.000	85	-
	13983.644	14003.013	-551.284	19.369	95	110

Buttons: Delete from base, Delete line, Get object, Save object as, DIALOG, Export, OK, Cancel, Apply, Help.

